



**GIOTTO**

the universal LED fixtures  
for civil & industrial applications

# Giotto

Four power versions available with nine optics variants for a full range of 36 models

- Save energy up to 70%
- high quality components, materials and finishes
- Elegant shape from an Italian design

Simple and reliable LED luminaires, suitable for industrial applications for light up production area or storage area with a high degree of protection greater than IP65. Available with powers up to 200W for installations up to 20 meters in height. Lamp body made of anodised extruded aluminum and side heads in ASA technopolymer with the frontal glass protection. Installations even in special environments with a range ambient temperature  $T_a -40 + 45^{\circ}C$



- Important finning of the heat sink for an effective heat dissipation
- Fixing by stainless steel bracket.
- Glass protection extrawhite light trasmission 97%
- CREE LED with a wide range of secondary optics
- High visual comfort 4000K, 5000K CRI>85
- Life spam up to 80.000 hours

## Features

Code	Power (W)*	Flux (lumen)	Colour Temperature (K)	CRI	Efficiency (lm/W)	Lenght (cm)	Weight (Kg)
GL3112#24	80	10215	4.000	85	127	362	5
GL3112#36	120	15323	4.000	85	127	468	5
GL3112#48	160	20431	4.000	85	127	574	7
GL3112#60	200	25258	4.000	85	127	680	9

Materials: central body in 6060 T5 extruded aluminum alloy and side heads in ASA technopolymer.  
Central body finishes: aluminum oxidized or painted with epoxy powders.

Gasket: bicomponent polyurethane supplied to robot.

LED cover: 4 mm anti-glare and anti-glare glass.

Shock and wind resistance: IK8 (5Joule) anti-vandal protection

Glass fixing: mechanical, without the use of glues and silicone  
External screws: stainless steel  
Light source: CREE Led 160lm / W at Ta 25 ° Tj85 °

Color Tempaure: 4000K

CRI color rendering index> 80

Life spam: 80,000 hours LM70B10

Operating ambient temperature: -40 / + 45 ° C

Wiring: male / female connector

Overvoltage protections: 10KV

Input Voltage: 110 - 277 Vac; 50 ÷ 60 Hz

Power: from 80W to 200 W

Cos:> 0,98

System efficiency: 127 lm/W

Insulation class: I (II in opzione)

Degree of protection: IP67

European Conformity: CE marking;

standards: EN 60598-1- EN 60598-2-3

EN 62471, EN 55015, EN 61547,

EN 61000-3-2, EN 61000 3-3

Electromagnetic compatibility:

compliant devices EN 55015, EN

61547, EN 61000-3-2, EN 61000-3-3

Appliances that comply with the regulations

2006/95/CE (LVD), 2004/108/CE (EMC),

2002/95/CE (RoHS) 2002/95/CE (RoHS)

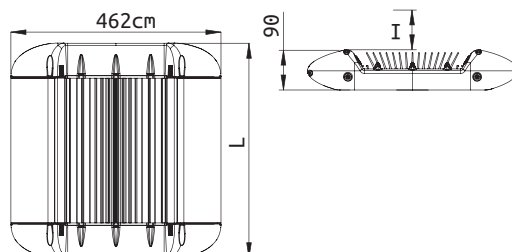
Photobiological safety:

Risk group classifications

EN 62471: EXEMPT

The company reserves the right to change the data without notice

## Dimension



Modello 3112#24 L = 362cm

Modello 3112#36 L = 468cm

Modello 3112#48 L = 574cm

Modello 3112#60 L = 680cm

## Optional

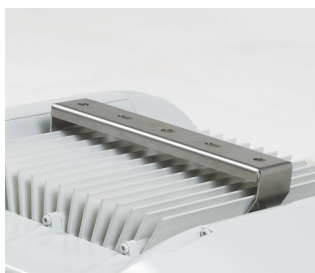
- ☐ Kit of Emergency
- ☐ Kit dual ON for photoperiod system
- ☐ Dimable 1-10V /Dali/ Bluetooth
- ☐ Kit LED dinamic white

## Fixing

Straight bracket



Low bracket



Slanted bracket



GIOTTO is the universal LED fixtures, that thanks to the wide range of optics available,  
it can be used for installations from 3 to 20 meters high

#### LE OTTICHE

